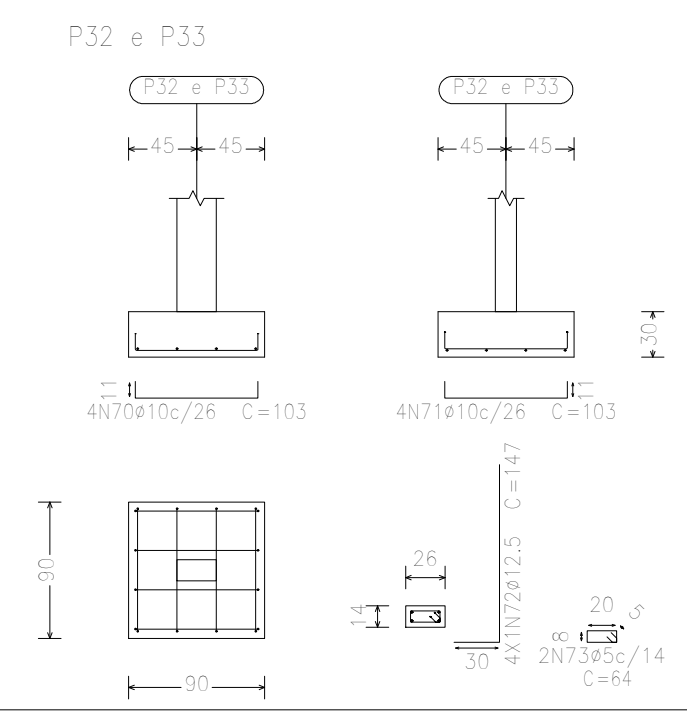
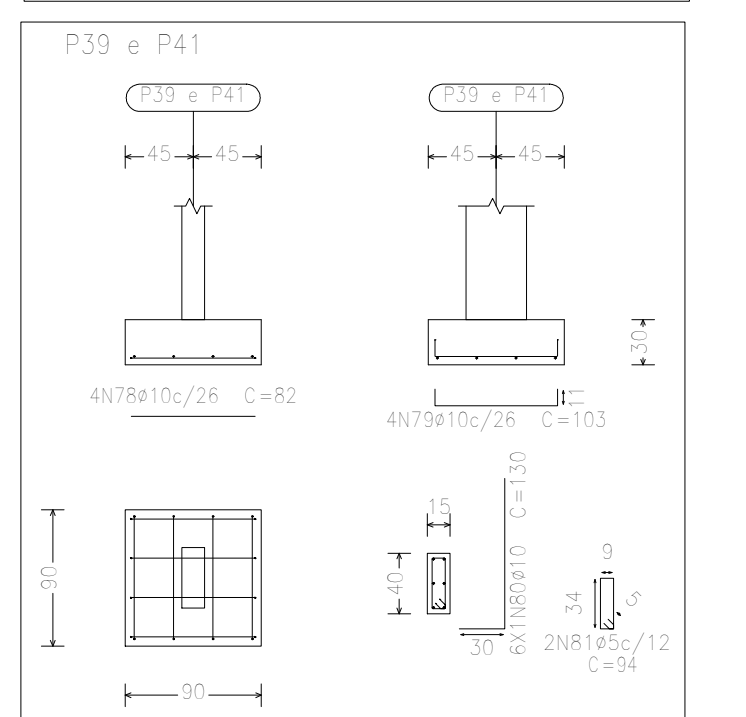
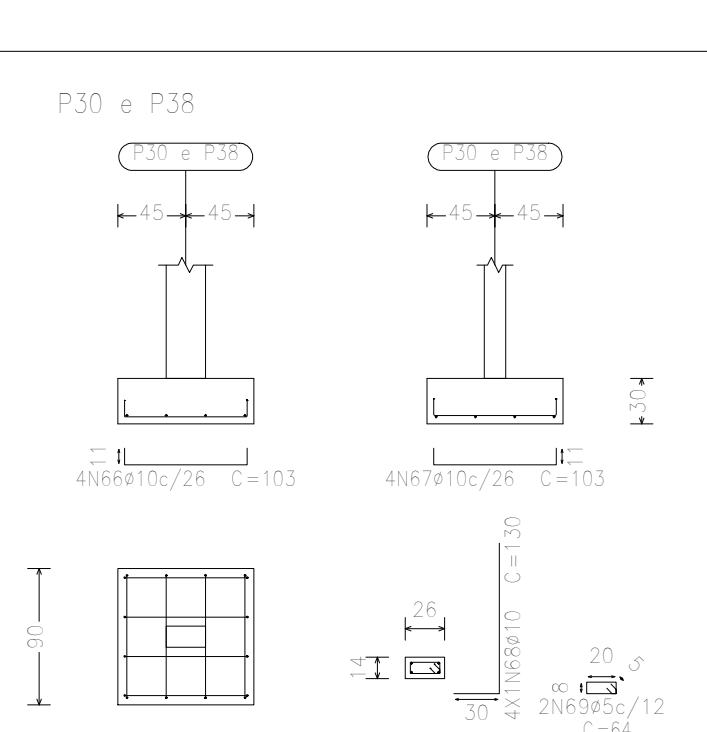
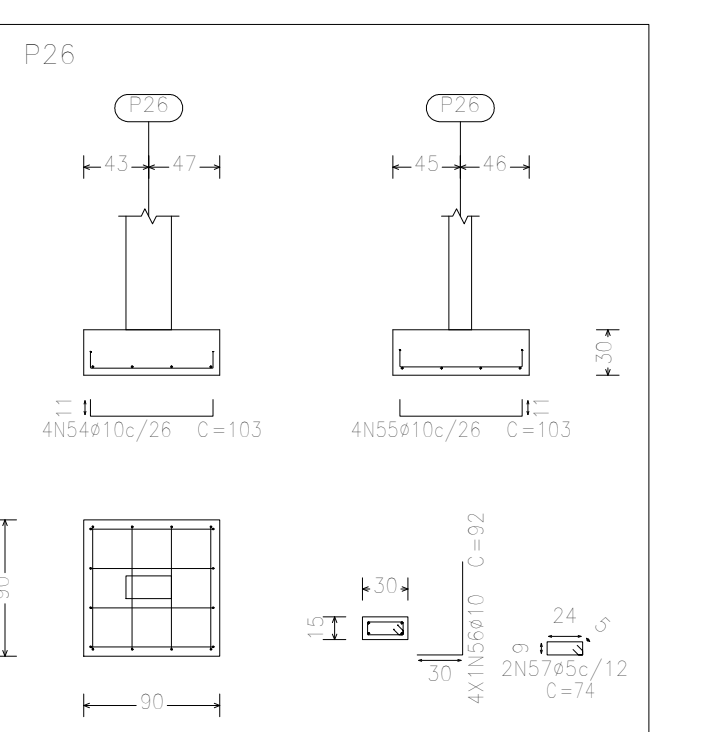
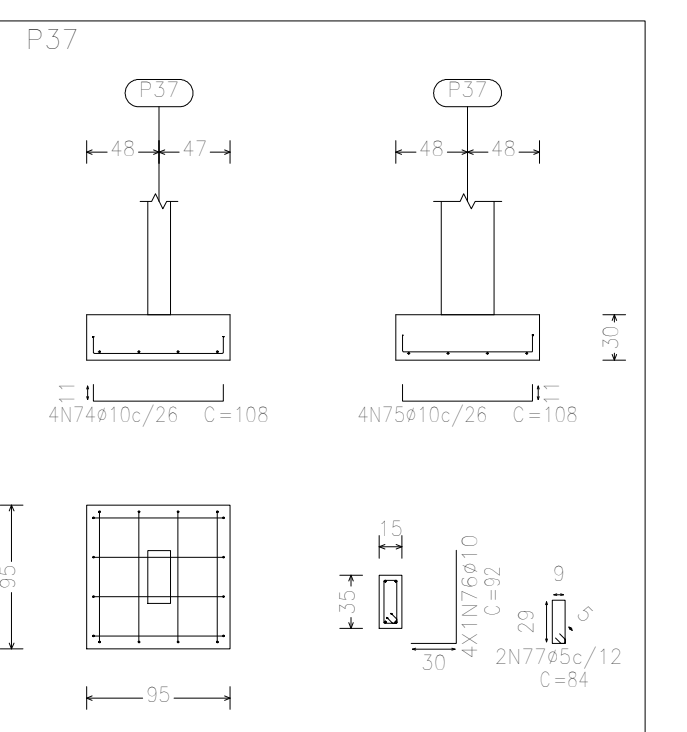
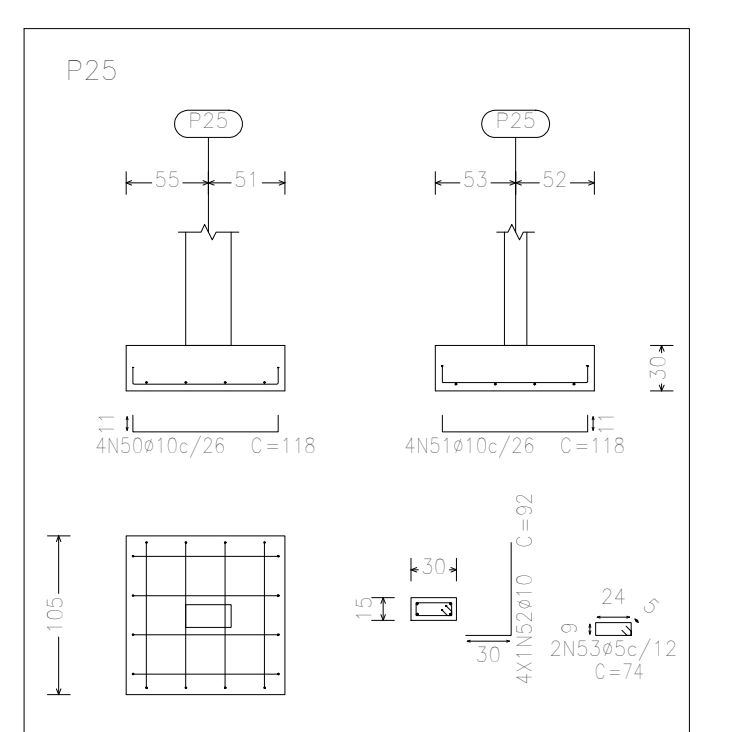
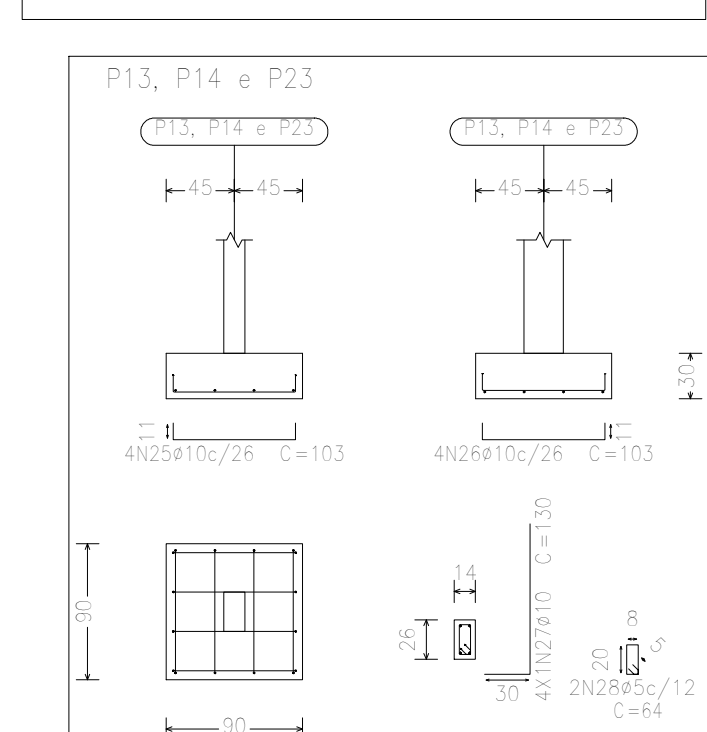
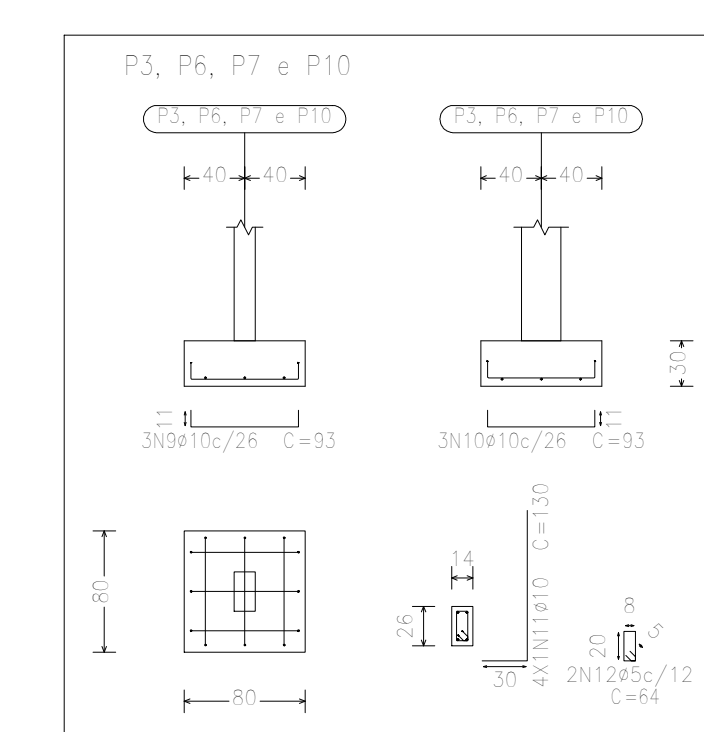
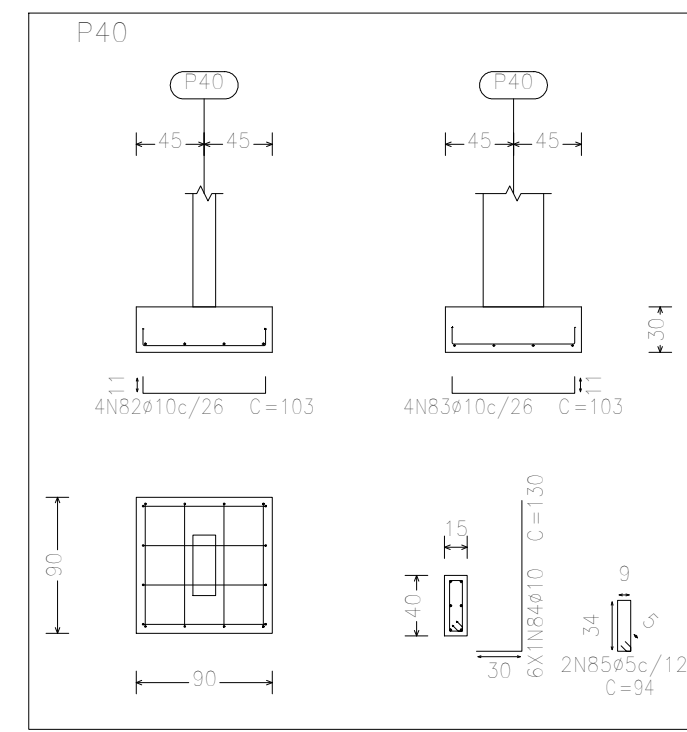
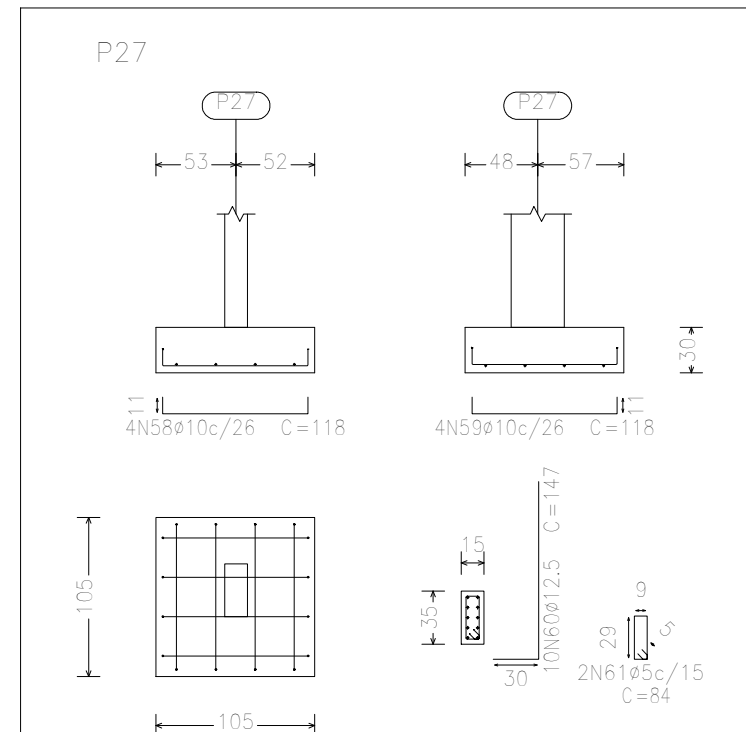
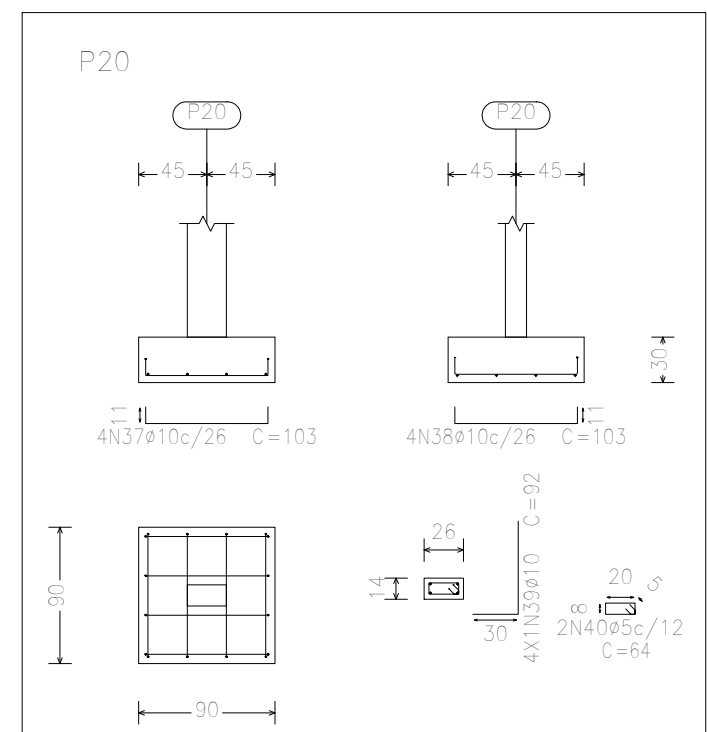
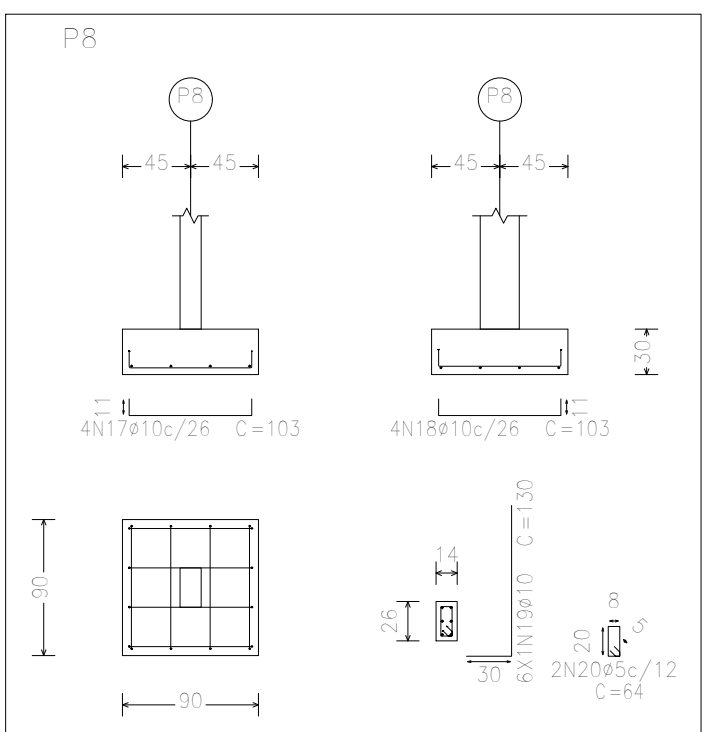
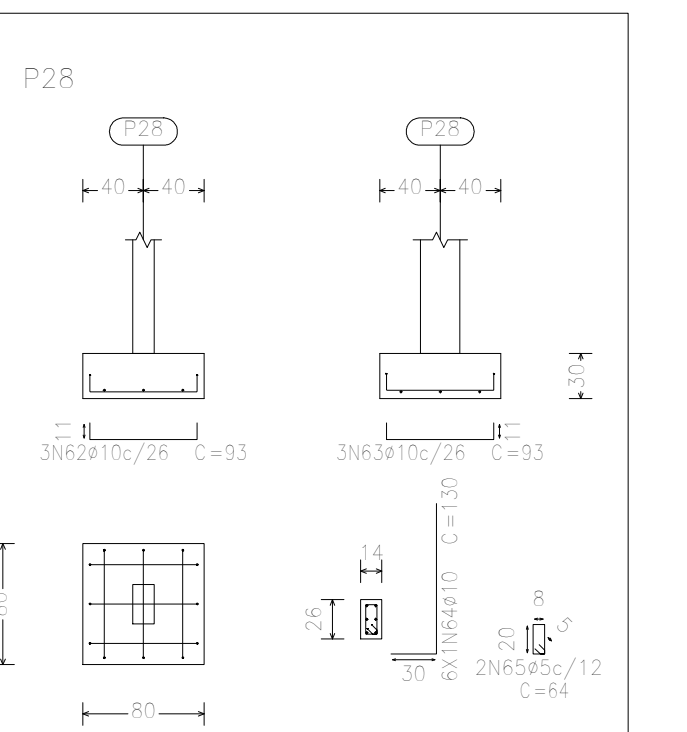
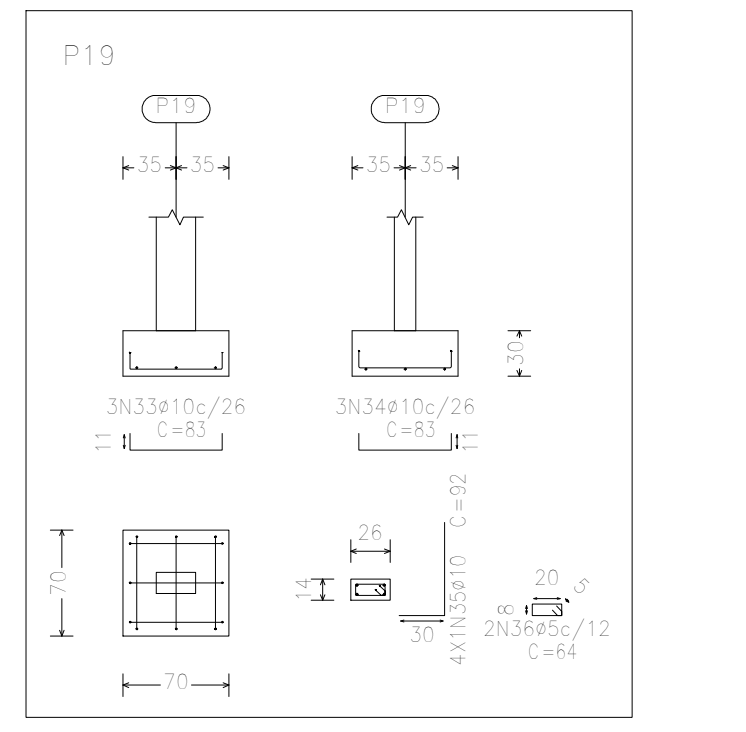
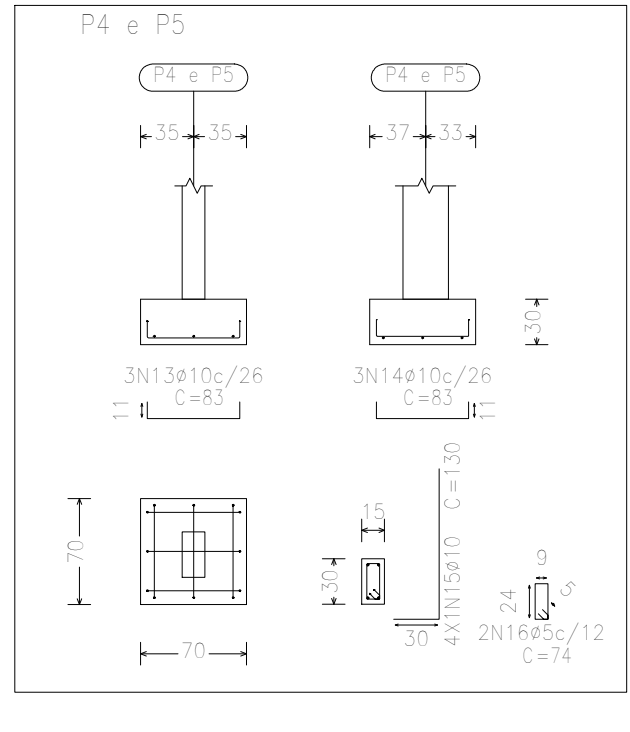
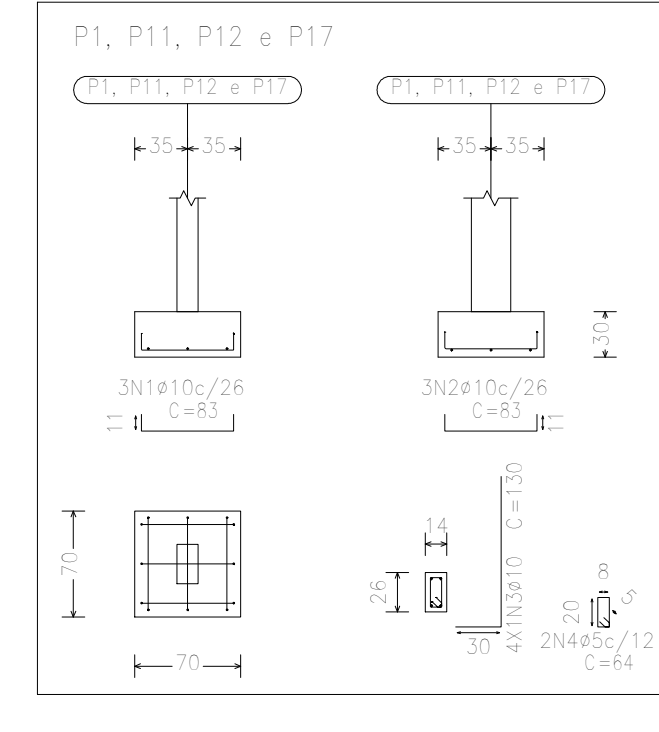
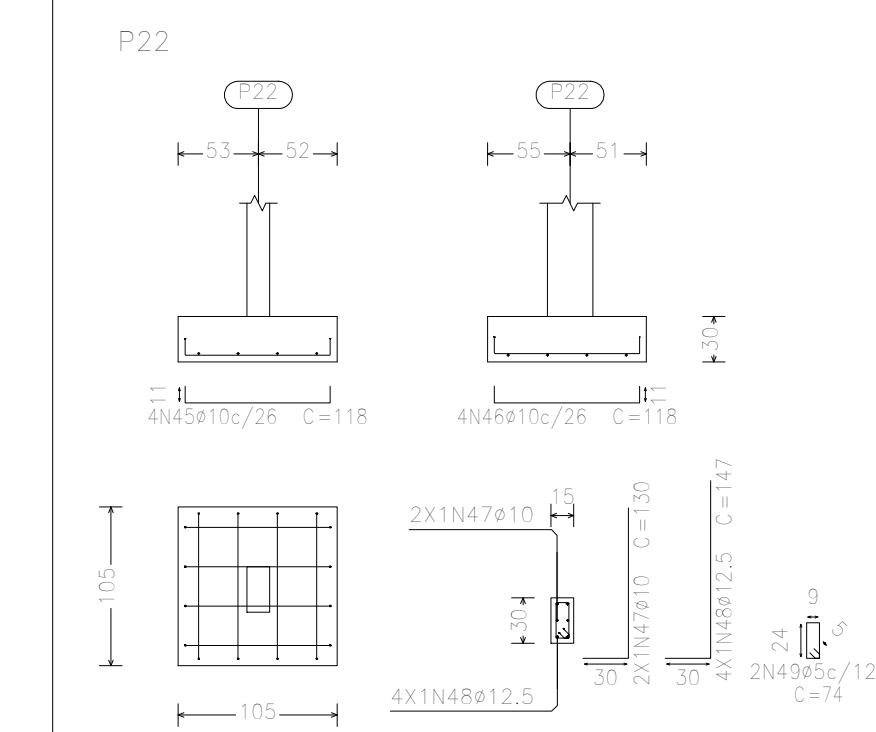
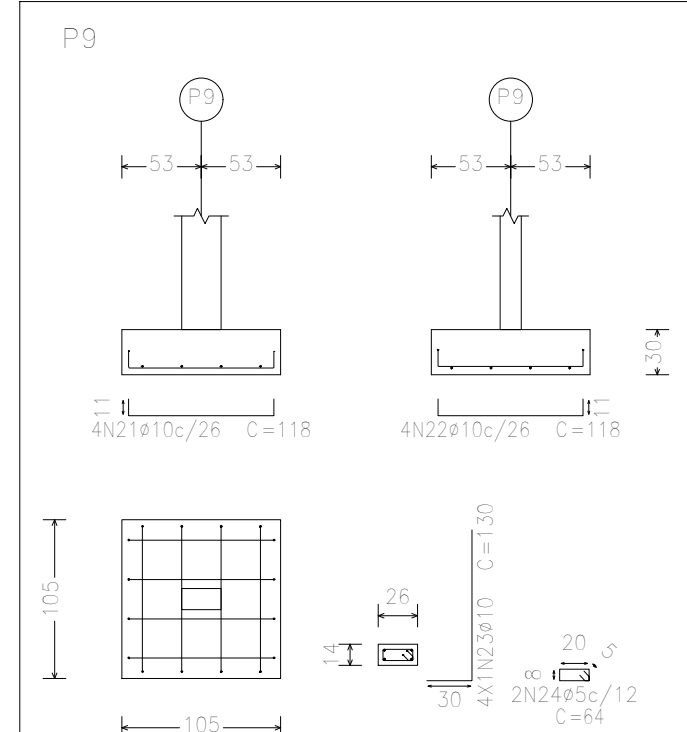
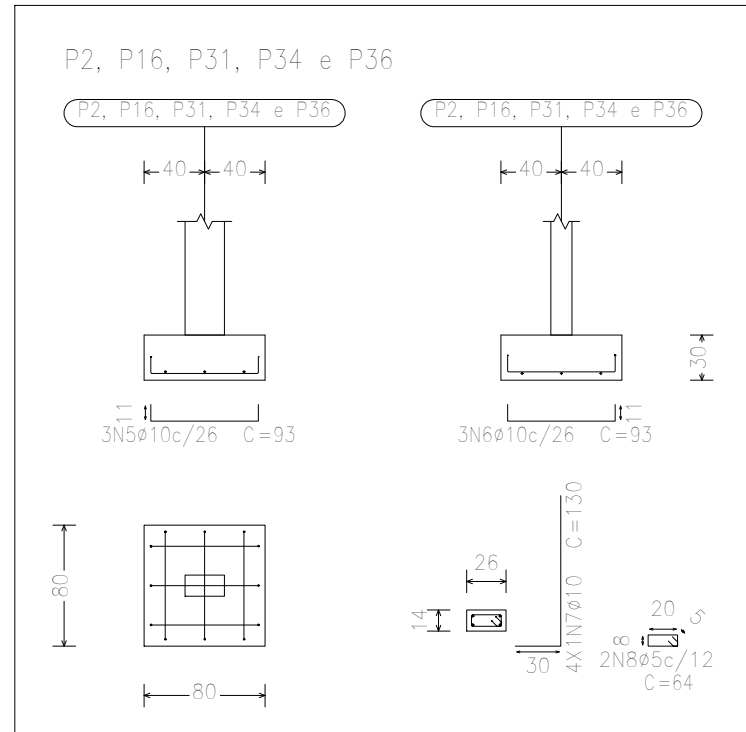


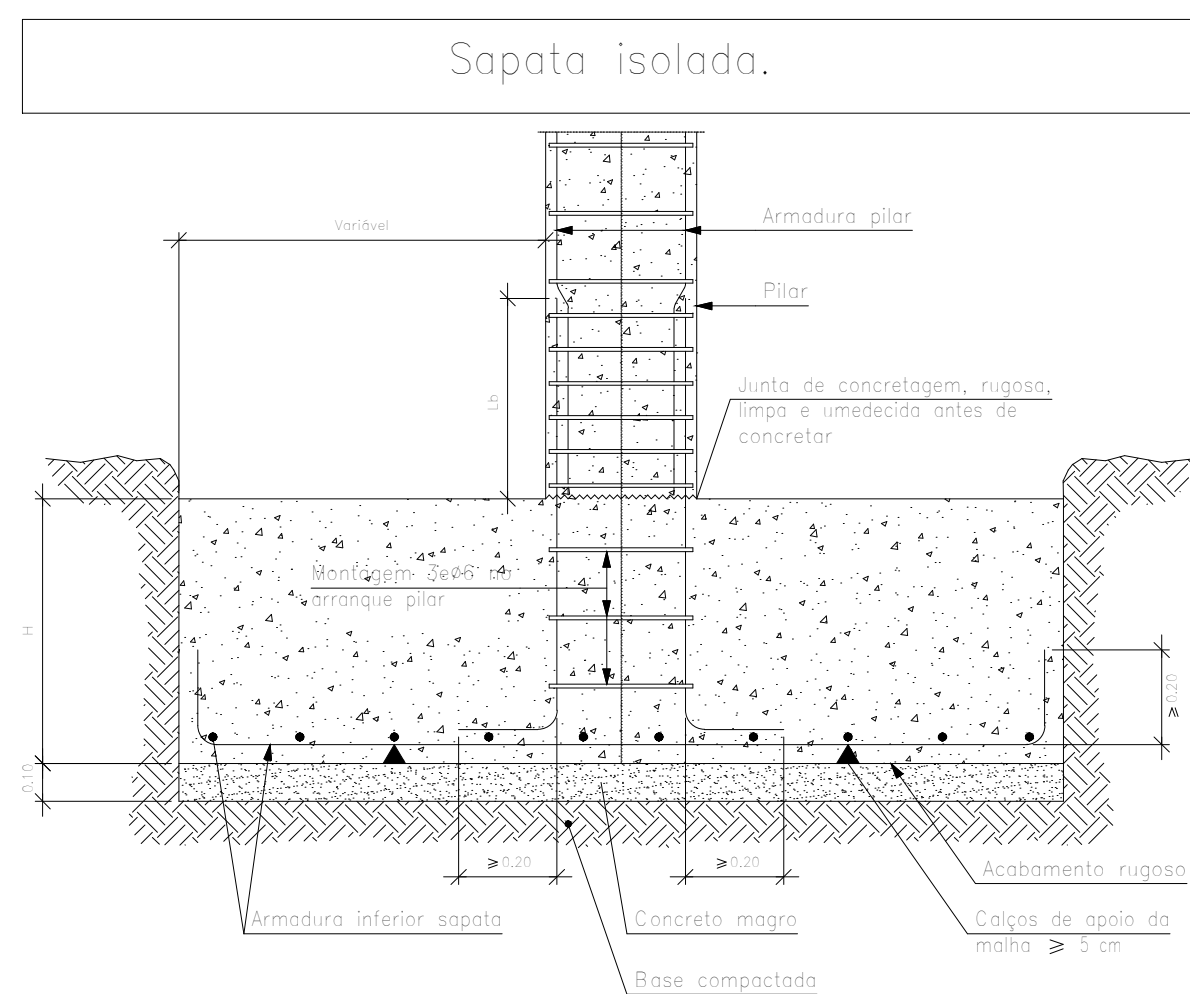
PLANTA DE FUNDAÇÃO  
UBS BICO TORTO, APÓDI/RN  
Indicados

Elemento	Pos.	Diam.	Q.	Dob.	Refo.	Dob.	Comp.	Total	CA-50	CA-60
P1=P11=P12=P17	1	ø10	3	11	61	11	83	249	1,5	
	2	ø10	3	11	61	11	83	249	1,5	
	3	ø10	4	30	100	64	130	520	3,2	
	4	ø5	2				64	128		0,2
	Total+10%: 27,2									0,8
P2=P16=P31=P34	5	ø10	3	11	71	11	93	279	1,7	
	6	ø10	3	11	71	11	93	279	1,7	
	7	ø10	4	30	100	64	130	520	3,2	
	8	ø5	2				64	128		0,2
	Total+10%: 7,3									0,2
P3=P6=P7=P10	9	ø10	3	11	71	11	93	279	1,7	
	10	ø10	3	11	71	11	93	279	1,7	
	11	ø10	4	30	100	64	130	520	3,2	
	12	ø5	2				64	128		0,2
	Total+10%: 7,3									0,8
P4=P5	13	ø10	3	11	61	11	83	249	1,5	
	14	ø10	3	11	61	11	83	249	1,5	
	15	ø10	4	30	100	74	148	588	5,7	
	16	ø5	2				64	128		0,2
	Total+10%: 6,8									0,4
P8	17	ø10	4	11	81	11	103	412	2,5	
	18	ø10	4	11	81	11	103	412	2,5	
	19	ø10	6	30	100	64	130	780	4,8	
	20	ø5	2				64	128		0,2
	Total+10%: 10,8									0,2
P9	21	ø10	4	11	96	11	118	472	2,9	
	22	ø10	4	11	96	11	118	472	2,9	
	23	ø10	4	30	100	64	130	520	3,2	
	24	ø5	2				64	128		0,2
	Total+10%: 9,9									0,2
P13=P14=P23	25	ø10	4	11	81	11	103	412	2,5	
	26	ø10	4	11	81	11	103	412	2,5	
	27	ø10	4	30	100	64	130	520	3,2	
	28	ø5	2				64	128		0,2
	Total+10%: 9,0									0,6
P15=P18=P29	29	ø10	3	11	61	11	83	249	1,5	
	30	ø10	3	11	61	11	83	249	1,5	
	31	ø10	4	30	100	64	130	520	3,2	
	32	ø5	2				64	128		0,2
	Total+10%: 6,8									0,6
P19	33	ø10	3	11	61	11	83	249	1,5	
	34	ø10	3	11	61	11	83	249	1,5	
	35	ø10	4	30	62	64	92	368	2,3	
	36	ø5	2				64	128		0,2
	Total+10%: 5,8									0,2
P20	37	ø10	4	11	81	11	103	412	2,5	
	38	ø10	4	11	81	11	103	412	2,5	
	39	ø10	4	30	62	64	92	368	2,3	
	40	ø5	2				64	128		0,2
	Total+10%: 8,0									0,6
P21=P24=P36	41	ø10	3	11	71	11	93	279	1,7	
	42	ø10	3	11	71	11	93	279	1,7	
	43	ø10	4	30	62	64	92	368	2,3	
	44	ø5	2				64	128		0,2
	Total+10%: 6,3									0,6
P22	45	ø10	4	11	96	11	118	472	2,9	
	46	ø10	4	11	96	11	118	472	2,9	
	47	ø10	4	30	100	74	148	588	5,7	
	48	ø12,5	4	30	117	74	148	588	5,7	
	49	ø5	2				74	148		0,2
P25	50	ø10	4	11	96	11	118	472	2,9	
	51	ø10	4	11	96	11	118	472	2,9	
	52	ø10	4	30	62	64	92	368	2,3	
	53	ø5	2				74	148		0,2
	Total+10%: 8,9									0,2
P26	54	ø10	4	11	81	11	103	412	2,5	
	55	ø10	4	11	81	11	103	412	2,5	
	56	ø10	4	30	62	64	92	368	2,3	
	57	ø5	2				74	148		0,2
	Total+10%: 8,0									0,2
P27	58	ø10	4	11	96	11	118	472	2,9	
	59	ø10	4	11	96	11	118	472	2,9	
	60	ø12,5	10	30	117	84	147	1470	14,2	
	61	ø5	2				84	168		0,3
	Total+10%: 22,0									0,3
P28	62	ø10	3	11	71	11	93	279	1,7	
	63	ø10	3	11	71	11	93	279	1,7	
	64	ø10	6	30	100	64	130	780	4,8	
	65	ø5	2				64	128		0,2
	Total+10%: 9,0									0,2
P30=P38	66	ø10	4	11	81	11	103	412	2,5	
	67	ø10	4	11	81	11	103	412	2,5	
	68	ø10	4	30	100	64	130	520	3,2	
	69	ø5	2				64	128		0,2
	Total+10%: 9,0									0,2
P32=P33	70	ø10	4	11	81	11	103	412	2,5	
	71	ø10	4	11	81	11	103	412	2,5	
	72	ø12,5	4	30	117	64	147	588	5,7	
	73	ø5	2				64	128		0,2
	Total+10%: 11,8									0,4
P37	74	ø10	4	11	86	11	108	432	2,7	
	75	ø10	4	11	86	11	108	432	2,7	
	76	ø10	4	30	62	84	94	188		0,3
	77	ø5	2				84	168		0,3
	Total+10%: 8,5									0,3
P39=P41	78	ø10	4	11	82	11	103	412	2,5	
	79	ø10	4	11	81	11	103	412	2,5	
	80	ø10	6	30	100	94	188	780	4,8	
	81	ø5	2				94	188		0,3
	Total+10%: 10,2									0,3
P40	82	ø10	4	11	81	11	103	412	2,5	
	83	ø10	4	11	81	11	103	412	2,5	
	84	ø10	6	30	100	94	188	780	4,8	
	85	ø5	2				94	188		0,3
	Total+10%: 10,8									0,3
	86	ø5					94	188		0,3
	Total+10%: 10,8									0,3
	Total+10%: 10,8									0,3
	Total+10%: 10,8									0,3
	Total+10%: 10,8									0,3



Resumo Aço Fundação	Comp. total (m)	Peso+10% (kg)	Total
CA-50	ø10	470,0	319
	ø12,5	32,3	34
CA-60	ø5	56,1	10
Total			363

Fundação  
Detalhamento fundação  
Concreto: C25, em geral  
Escala: 1:50



Resumo de medição (incluindo perdas de aço)

Elemento	CA-50 (kg)			CA-60 (kg)	Concreto (m³)		Fôrmas (m²)
	Ø10	Ø12.5	Total	Ø5	C25, em geral	Limpeza	
Referências: P1, P11, P12 e P17	4x6.89		27.56	4x0.22	4x0.15	4x0.05	4x0.84
Referências: P2, P16, P31, P34 e P36	5x7.30		36.50	5x0.22	5x0.19	5x0.06	5x0.96
Referências: P3, P6, P7 e P10	4x7.30		29.20	4x0.22	4x0.19	4x0.06	4x0.96
Referências: P4 e P5	2x6.89		13.78	2x0.25	2x0.15	2x0.05	2x0.84
Referência: P8	10.88		10.88	0.22	0.24	0.08	1.08
Referência: P9	9.92		9.92	0.22	0.33	0.11	1.26
Referências: P13, P14 e P23	3x9.11		27.33	3x0.22	3x0.24	3x0.08	3x1.08
Referências: P15, P18 e P29	3x6.89		20.67	3x0.22	3x0.15	3x0.05	3x0.84
Referência: P19	5.86		5.86	0.22	0.15	0.05	0.84
Referência: P20	8.09		8.09	0.22	0.24	0.08	1.08
Referências: P21, P24 e P35	3x6.28		18.84	3x0.22	3x0.19	3x0.06	3x0.96
Referência: P22	8.16	6.22	14.38	0.26	0.33	0.11	1.26
Referência: P25	8.90		8.90	0.25	0.33	0.11	1.26
Referência: P26	8.09		8.09	0.25	0.24	0.08	1.08
Referência: P27	6.40	15.58	21.98	0.28	0.33	0.11	1.26
Referência: P28	9.08		9.08	0.22	0.19	0.06	0.96
Referências: P30 e P38	2x9.11		18.22	2x0.22	2x0.24	2x0.08	2x1.08
Referências: P32 e P33	2x5.59	2x6.22	23.62	2x0.22	2x0.24	2x0.08	2x1.08
Referência: P37	8.35		8.35	0.29	0.27	0.09	1.14
Referências: P39 e P41	2x10.31		20.62	2x0.33	2x0.24	2x0.08	2x1.08
Referência: P40	10.88		10.88	0.33	0.24	0.08	1.08
Totais	318.51	34.24	352.75	9.64	8.72	2.91	41.10